

WINAM GRASSROOTS WOMEN COMMUNITY BASED ORGANIZATION

INTRODUCTION

Who We Are and What We Do

Winam Grassroots, is a multifaceted organization which works with indigenous communities within the area around Lake Victoria in the western part of Kenya – Kisumu and Siaya Counties. It has a vision of having communities that are safe, resilient and self-sustained for growth while maximizing the utilization of local resources through harnessing local knowledge that will transcend into wealth, security and prosperity through lobbying, advocacy and capacity building of grassroots women and youth. We empower communities by creating awareness regarding issues around the Environment and Climate Change, Disaster Risk reduction, Conservation Agriculture, Gender Equality and Empowered Communities. Working with different partners such as GNDR on DRR, Huariuo Commission and Oxfam Kenya on Humanitarian response, County Government of Kenya and the community as our major stakeholders through community structures and local administration.

Our website: <https://www.winamgrassroots.org>

At Winam, we are key on Advocacy which promotes access to displacement risk reduction information. Winam Grassroots' geographical jurisdiction which includes areas that are prone to disaster, majorly flooding and the backflow of Lake Victoria which affects lots of livelihoods. As grassroots organization we believe that communities need to be assisted in identifying, assessing and therefore finding their own local solutions of reducing risks of disasters.

We therefore work with communities to ensure that we can mitigate and reduce the socio economic vulnerabilities to disasters well as dealing with environmental and other hazards that trigger them.

In Early Warning the Organization works with communities to tap on local knowledge on early warning signs and encourage them to adapt this knowledge for their benefit. We engage the communities through local dialogues and peer to peer learning. We have responded to disasters in Kisumu and Siaya Counties offering humanitarian support to the victims and ensuring that basic rights in humanitarian situations are adhered to. Our work in Disaster reduction is guided by the Sendai Framework for Disaster Risk Reduction as well as SDG 13 ON Climate Action.

In regards to the recent floods that just occurred in 2024 we as an Organization had initially begun with Several Dialogues with the communities that we work with around on Disaster Risk Reduction and Early Warning Signs just before the onset of the heavy rains this was to prepare the communities for the long rains, within these Dialogues we had a set of community structures that is the local administrations, community members, village elders, PDWs most importantly we had our grassroots women who are normally affected largely by disasters as they are the ones who are affected as home caregivers.

We were able to hold radio talk shows on our local radio stations - Sky Fm to help dissemination more information to our communities at large on Preparedness Resilience Building in DRR so as to reach a larger number whom we weren't able to get to during the Dialogues We were able to share posters too on DRR as we had Dialogues in the communities.

Winam Grassroots was able to do a Baseline Survey before and during the heavy rains being able to collect raw data within Kisumu covering Kisumu East and Central Sub-counties with the majorly affected Wards that is Nyalenda A& B (Kapuothe) Manyatta A& B, Kobura, Kolwa Central and Railways wards.

In regards to response on losses and damages brought about by the floods Winam Grassroots had return visits to the communities we initially had Dialogues with and those we work with and around we were able to reach back to the most affected by offering basic needs especially food stuffs that would help them for a period as they awaited for other responders.

We were able to reach out to at least 354 persons who were affected during the floods with most of them not being able to stay in their homesteads and had to evacuate to rescue centers such as Nanga Primary School acted as a rescue center for those in Nyalenda A& B areas with some of the homes and houses being completely damaged. Our Major challenges not being able to assist in reconstruction of the lost homes sadly and the number of affected was so high also not being able to support the largely affected as the numbers grew day by day.

Kindly find attached below some of the photos we took of the affected areas, posters and banners we had during the Dialogues conducted, Radio talk show and when we went back to respond to the communities.

In case of Clarifications kindly feel free to reach out to us at: winamgrassrootsco@gmail.com or maryopot@gmail.com

Direct contact persons

1. Director Mary Were Tel: +254721556307
2. Programs Dorothy Midimo Tel: 254740751605

Pictorials Indicating Each Occurrence documented by Winam Grassroots.



1. Holding Radio Talk Shows in local Dialect to disseminate information on Disaster Preparedness hosted by Radio Nam Lolwe

2. Holding a focus group discussion to get feedback from railways ward Kanyamedha and k Kasarani residents who are highly affected by floods had to evacuate to nearby schools and churches for shelter.



3. Holding feedback meetings with community in Nyalenda ward covering Kapuothe, Dunga and Nanga areas which are highly affected by floods majorly during the backflow of Lake Victoria caused by long unpredictable rains.



Pictorials 2 and 3 of community feedback meetings held by Winam grassroots after interventions during flooding period.



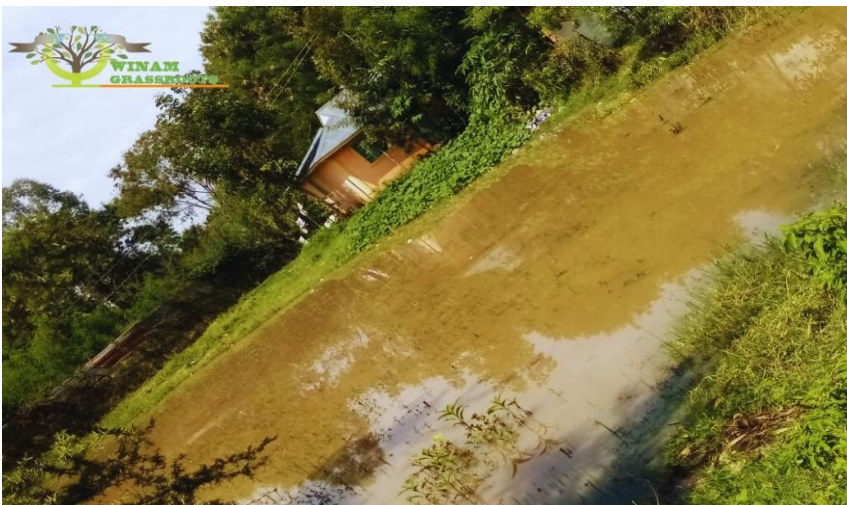
Homes affected by floods

  **HUAIROU COMMISSION**
Women, Homes & Community

**Resilience building in DRR:
Early warning and preparedness,**

DIALOGUE

Winam on Disaster Risk Reduction and Preparedness supported by Huairuo Commission.



Poster distributed during community dialogues by Winam Grassroots disseminate information and for action by the community before, during and after disasters.



Disaster Preparedness 101
Tips for Safeguarding Your Home
and Community

Emergency Kit



Create a well-stocked emergency kit with essentials like water, non-perishable food, first aid supplies, a flashlight, batteries, and important documents.

Communication Plan



Establish a communication strategy with family and neighbors, including designated meeting points and emergency contacts.

Evacuation Plan



Know evacuation routes and have a plan in place, considering pets and special needs. Practice evacuation drills with your family.

Secure Your Home



Reinforce doors and windows, secure heavy furniture, and know how to turn off utilities in case of emergencies like earthquakes or floods.

Emergency Contacts



Keep a list of important contacts, including local authorities, medical facilities, etc. Share this information with family members.

Stay Informed



Stay updated on weather alerts, community warnings, and emergency information through local news, or emergency alert systems.

Community Engagement



Participate in community preparedness programs, attend local workshops, and collaborate with neighbors to enhance overall disaster resilience in your community.